



G
Global
'TRIBRID' CARGO VESSEL

The World's Most Innovative Shipping Vessel



www.thegoliathseries.com

Tribrid' propulsion systems – Engines, Solar Assisted Electric Motors and Sail Systems G-Global is 'Big Port' friendly and does not add pressure onto infrastructure as she can **self-offload** Folding masts to **navigate under bridges** Self-contained offloading crane systems within the boom structures **Reduces offloading times** dramatically and opens up new destinations Refrigerated containers can be powered by the onboard **2700 m2 solar systems** whilst under sail Ability to provide significant **dockside solar power** to land based users **Fully shaded containers eliminate 'heat stress' of cargo** The **'Ship-To Shore' capability** opens new markets, new business opportunities and provides large capability for **Aid, Disaster Recovery and construction projects** The flexibility of G-Global being able to move **containers, bulk cargo or motor vehicles** or a mix of the three is a big opportunity to better service smaller diverse markets The G-Global can **avoid cost prohibitive ports or wharf offloading charges**



www.thegoliathseries.com

'Ship-To Shore' capability opens new markets, new business opportunities and provides large capability for Aid, Disaster Recovery and construction project



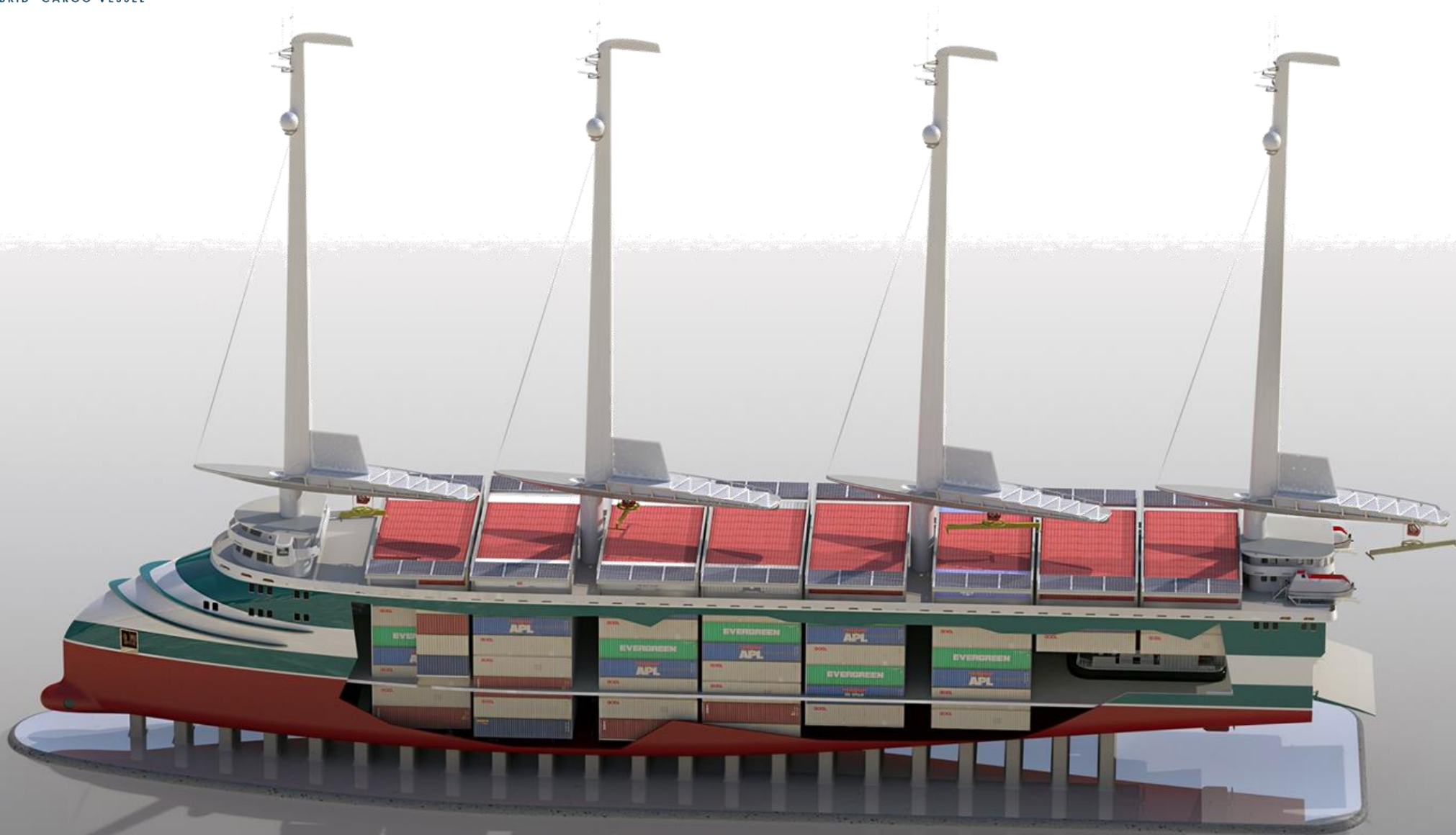
www.thegoliathseries.com

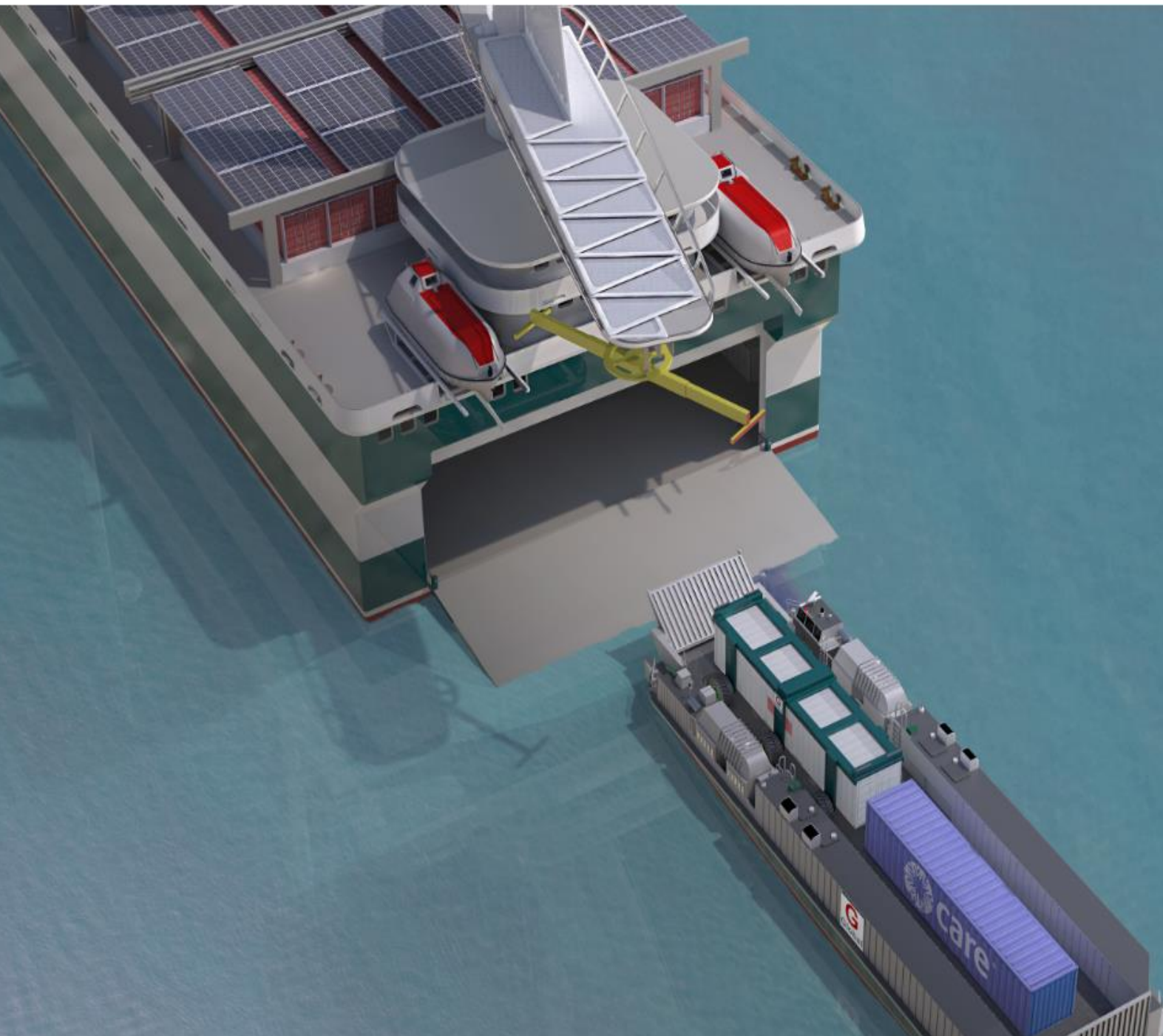




www.thegoliathseries.com

The G-Global reduces wind resistance by approximately 65% making it possibly the world's most efficient 'Tribrid' sail assisted cargo vessel.





www.thegoliathseries.com



www.thegoliathseries.com

